

EH 50

Ganci automatici
Automatic couplings
Vollautomatische Anhängerkupplungen
Crochets automatiques
Автоматические крюки

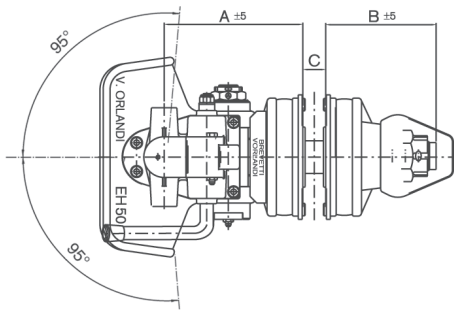
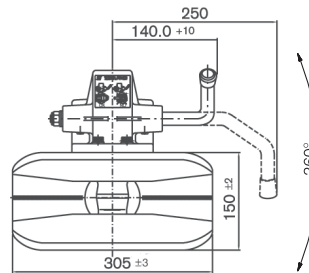
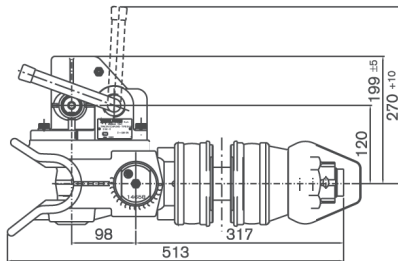
Per occhioni - For drawbar eyes
 Für Zugösen - Pour anneaux
 Для серег

Ø
50

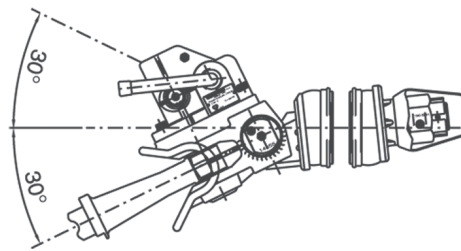
94 / 20 / CE

Dati tecnici - Technical data - Technische Daten - Données techniques - Технические данные

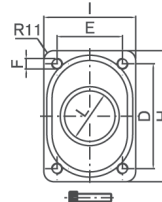
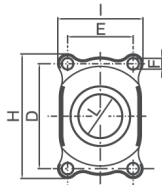
Codice Article number Artikelnummer Code article Код	Flangia Hole pattern Lochbild Eintraxe Фланец mm	Valore D D-Value D-Wert Valeur D Величина D kN	Peso Weight Gewicht Poids Вес kg	94 / 20 / CE		ECE R55-01
				Classe Class Klasse Classe Класс	Omologazione Homologation Genehmigung Homologation Сертификация	
EH503A0 EH503B0	120x55	130	37	C50-X	e3 00-0395	-
EH502A0 EH502B0	140x80	220	39	C50-X	e3 00-0394	-
EH501A0 EH501B0	160x100	220	39	C50-X	e3 00-0393	E3 01-3026
EH531A0 EH531B0	160x100	220	41			



EH 501-EH 502-EH 503



EH 531



	A (mm)	B (mm)	C (mm)	D (mm)	E (mm)	F (mm)	H (mm)	I (mm)	L (mm)
EH503	210	170	35	120	55	ø14	164	118	ø74
EH502	212	168	35	140	80	ø19	190	130	ø84
EH501	212	168	35	160	100	ø19	190	130	ø92
EH531	215	165	35	160	100	M16	200	140	ø93

Versione - Version - Ausführung - Version - Модель

A	Leva alta - Action lever upwards Handhebel aufwärts - Levier d'ouverture vers le haut - Верхний рычаг
B	Leva bassa - Action lever downwards Handhebel abwärts - Levier d'ouverture depuis le bas - Нижний рычаг

1990095-E